

# continu

## Alcohol Free Disinfection & Cleaning Solutions



[www.nuview.co.uk](http://www.nuview.co.uk)

# What is Continu?

---

Continu offers a fully compliant range of water-based cleaning and disinfection products developed for use in Medical settings. Continu is compliant to the relevant legislations for each product type, including UK MDR. Whether it is cleaning and disinfecting hands, surfaces or equipment, there is a Continu solution to meet your needs.

Continu was developed in 2009 utilising the latest technology in infection control solutions. Problems of microcracking on surgery equipment and surface degradation were being reported from use of pre-existing, market place disinfectants. As many of our own lines of equipment were becoming damaged by inadequate disinfectants, we started development of our own range, called Continu.

Continu, being water based, can be used with confidence on all surfaces within a clinical area, including equipment, without compromising on efficacy. No hazard warnings also make Continu an ideal choice that simplifies the COSHH risk assessment process.

Continu starts working instantly upon application and is independently tested as effective from 30 seconds, the shortest amount of time that can be claimed from the EN Test standards. But, this only tells part of the story. Continu remains on the surface to provide a residual decontamination effect and inhibits further growth, working after application. Efficacy therefore improves with continued use.



# What testing has been undertaken on Continu?

Continu is independently tested to meet or exceed the following EN Test Standards.

## ACTIVITY IN THE MEDICAL AREA

<b>EN14476:2013 + A1:2015</b> for virucidal activity of chemical disinfectant in the medical area.	<b>EN14348:2015</b> for Tuberculocidal activity of chemical disinfectant in the medical area.	<b>EN13727:2012 + A2:2015</b> for bactericidal activity of chemical disinfectant in the medical area.	<b>EN13727:2012 + A1:2013</b> for Hygienic Hand Rub products.
<b>EN13624:2013</b> for fungicidal activity of chemical disinfectant in the medical area.	<b>EN13697:2015 + A1:2019</b> for bactericidal and fungicidal activity of chemical disinfectant on surfaces without mechanical action.	<b>EN16615 (2015)</b> Evaluation of bactericidal and yeasticidal activity of wipes in medical area.	

## ACTIVITY IN FOOD, INDUSTRIAL, DOMESTIC & INSTITUTIONAL AREA

<b>EN1276:2009</b> Evaluation of bactericidal activity of chemical disinfectants used in food, industrial, domestic, and institutional areas.	<b>EN1650:2008+A1:2013</b> Evaluation of fungicidal or yeasticidal activity of chemical disinfectants and antiseptics used in food, industrial, domestic and institutional areas.
--	--

## OTHER

<b>EN13623:2010</b> for bactericidal activity against Legionella in Aqueous systems.	We are always working on improving our test standards and data. We routinely undertake extra testing depending upon requirements and market needs.
---	--

# What Micro-Organisms has Continu been tested to be Effective Against?

BACTERIAL GROUP	FUNGAL / MOULD GROUPS	VIRUSES
Bacillus Licheniformis	Aspergillus niger	Norovirus
Bacillus subtilis	Aspergillus versicolor	All enveloped viruses. These include:
Campylobacter jejuni	Aureobasidium pullulans	Coronavirus
Clostridium perfringens	Candida Albicans	Hepatitis B
Corynebacterium pseudo-diphtheriae	Cladsporium cladosporioides	Hepatitis C
Eschericia coli	Penicillium purpurogenum	HIV-1
Eschericia coli O157:H7	Phoma violaceae	Influenza Type A (surrogate for H1N1)
Enterococcus hirae	Pleurococcus spp	
Enterococcus faecalis	Rhodotoula rubra	
Klebsiella pneumoniae	Sporobolomyces rose us	
Legionella pneumophilia	Stachybotrys chartarum	
Listeria monocytogenes	Stichococcus bacillaris	
Methicillin Resistant Staph. aureus (MRSA)	Stigeoclonium tenue	
Pseudomonas aeruginosa	Trentepohlia a urea	
Salmonella enteritidis	Trentepohlia odorata	
Salmonella choleraesuis		
Staphylococcus aureus		
Tuberculosis		

# Surface Cleaning & Disinfection

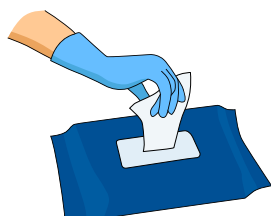
For the cleaning and disinfection of medical devices within surgeries, as well as being suitable for general surfaces. Our solutions provide fast, effective and long lasting disinfection whilst ensuring surfaces are clean as well as decontaminated. Available in pre impregnated wipes, sprays and concentrated floor cleaner.



## How to Clean Surfaces Effectively

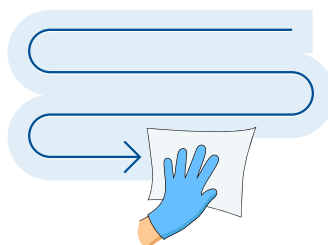
### Wipes

1



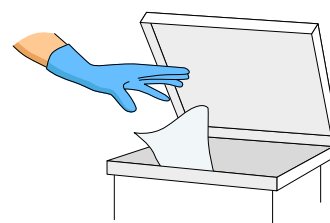
As per COSHH assessment, wear recommended PPE and remove wipe from the pack.

2



Wipe surface in an "S" shaped pattern. Work from clean to dirty avoiding previously wiped area.

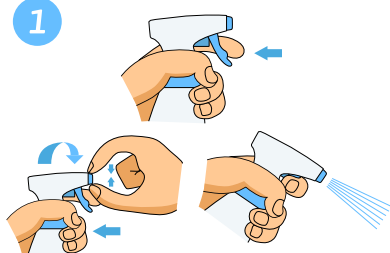
3



Use additional wipe if it becomes soiled or dry. Dispose of wipe as per site guidelines. Allow the surface to air dry.

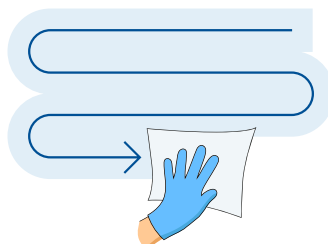
### Spray

1



Pull trigger slightly open. Turn nozzle to "ON" Position. Point nozzle onto the surface and spray evenly.

2



Wipe surface in an "S" shaped pattern. Work from clean to dirty avoiding previously wiped area.

3



Allow the surface to air dry.

# Hand Cleaning & Disinfection

Continu hand foams and hand soaps are an alcohol-free solution for cleaning and/or disinfecting your hands. Offered as a disinfectant foam for use without water, or as an antimicrobial soap for surgical scrubs and to clean hands between sessions. Our solution has the same hazard rating as water and has a pleasant neutral odour. Continu offers an alternative to traditional alcohol that will not irritate or dry out skin. Our hand cleaning range can be supplied in pump bottles, 5 litre refills and touch free, automatic dispensers.



## How to Wash Hands Effectively

- 1 Wet hands**  

- 2 Apply soap**  

- 3 Rub hands palm to palm**  

- 4 Scrub between fingers**  

- 5 Wipe fingernails and fingertips**  

- 6 Lather hands and wrist**  

- 7 Rinse hands**  

- 8 Dry with disposable towel**  


# Equipment Cleaning & Disinfection

Continu Instrument & Ultrasonic Cleaner concentrate is a “specifically formulated” concentrate solution that is ideal for pre- cleaning instruments as it is so gentle that it will not damage equipment but the surfactant is sufficiently powerful to remove debris.



## Key Benefits of Continu

- Continu disrupts the protein and lipid structures, preventing them from binding to a surface.
- Continu does it all. Continu both cleans and disinfects in one step. Saving valuable time and resource.
- Continu is odourless and attacks the bacteria that creates bad odours. Continu leaves a fresh, clean smelling working environment.
- Continu keeps working after application, preventing harmful micro-organisms from re-forming.
- Continu is Alcohol Free. Our formula will not cause microcracking to equipment, this prevents potential environments for micro-organisms to develop.

# What Customers have said about Continu...

---

*"Because the disinfectant is extremely gentle and alcohol-free, we have noticed a huge difference since using it. With the low hazard rating, we feel reassured that the risks to staff and patients are considerably reduced."*

**Georgina Whittle, Head Nurse, Hindhead**

*"The main benefits for us are that Continu is easy to use because the solution is already mixed and ready to go. The scent is also very appealing. Rather than that clinical odour you usually get, it actually has a pleasant smell."*

**Mel Barson, Dental Nurse, Marchwood**

*"Our practice has been using Continu products for many years now and we think they're great," says Michelle Reid, Clinical Manager at Heath Dental. "We love Continu products because we know they're all HTM 01-05 compliant, so we have complete trust in the range."*

*"In particular, the Continu surface cleaner is fast-acting and boasts long-lasting effects. The hand sanitising foam and hand soap are available in single-use pouches, which can be wall mounted in touch free dispensers. These look smart in surgery and ensure optimal compliance. I've had issues in the past with other hand sanitisers causing my hands to become excessively dry and sore. Since using Continu, however, this is no longer a problem as it's gentle on my skin. I would definitely recommend Continu to other clinicians. I can't fault its efficacy, ease-of-use, and compliance."*

*Moreover, Nuview's customer service is always excellent. Nuview dispatch our orders quickly and we've never had to wait for items to be re-stocked. The team is always friendly, helpful and happy to provide advice. Nuview has also supported us as a practice in some of our charity work."*

**Michelle Reid, Health Dental**



Head Office (UK) Nuview Ltd, Vine House, Selsley Road, Stroud, GL5 5NN

T: 0044 (0) 1453 872266 E: [sales@nuview.co.uk](mailto:sales@nuview.co.uk) [www.nuview.co.uk](http://www.nuview.co.uk)